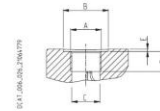


Pump type Motor type	A	B	C	D	E	F	G
	mm (inch)	mm (inch)	mm (inch)	mm (inch)	mm (inch)	mm (inch)	mm (inch)
HD. 30•17	184,5 (7.2638)	173 (6.8110)	23,45 (0.9232)	150 (5.9055)	80 (3.1496)	75 (2.9528)	75 (2.9528)
HD. 30•22	187,5 (7.3819)	176 (6.9291)					
HD. 30•24	188,8 (7.4331)	177,3 (6.9803)					
HD. 30•27	190,5 (7.5000)	179 (7.0472)					
HD. 30•34	195,5 (7.6969)	184 (7.2441)					
HD. 30•38	198,5 (7.8150)	187 (7.3622)					
HD. 30•43	201,5 (7.9331)	190 (7.4803)					
HD. 30•51	206,5 (8.1299)	195 (7.6772)					
HD. 30•56	209,5 (8.2480)	198 (7.7953)					
HD. 30•61	212,5 (8.3661)	201 (7.9134)					
HD. 30•73	220,5 (8.6811)	209 (8.2283)					
HD. 30•82	225,5 (8.8780)	214 (8.4252)					

Pump type HDP Motor type HDM	Displacement in ³ /rev (cm ³ /rev)	Max. pressure			Max. speed	Min. speed
		P ₁	P ₂	P ₃		
		psi (bar)			min ⁻¹	
HD. 30•17	1.05 (17,28)	4060 (280)	4350 (300)	4640 (320)	3000	400
HD. 30•22	1.34 (21,99)	4060 (280)	4350 (300)	4640 (320)	3000	400
HD. 30•24	1.47 (24,03)	4060 (280)	4350 (300)	4640 (320)	3000	400
HD. 30•27	1.63 (26,70)	4060 (280)	4350 (300)	4640 (320)	3000	400
HD. 30•34	2.11 (34,56)	3915 (270)	4205 (290)	4495 (310)	3000	400
HD. 30•38	2.40 (39,27)	3915 (270)	4205 (290)	4495 (310)	3000	400
HD. 30•43	2.68 (43,98)	3770 (260)	4060 (280)	4350 (300)	3000	400
HD. 30•51	3.16 (51,83)	3335 (230)	3770 (260)	4060 (280)	2500	300
HD. 30•56	3.45 (56,55)	3118 (215)	3553 (245)	3843 (265)	2500	300
HD. 30•61	3.74 (61,26)	2900 (200)	3335 (230)	3625 (250)	2000	250
HD. 30•73	4.50 (73,82)	2755 (190)	3045 (210)	3335 (230)	1700	250
HD. 30•82	4.98 (81,68)	2465 (170)	2755 (190)	3045 (210)	1500	250

GAS STRAIGHT THREAD PORTS **BSPP**

British standard pipe parallel (55°) conforms to UNI - ISO 228

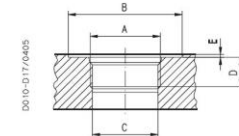


CODE	Nominal size	A	∅ B	∅ C	D	E	Nm (lbf in)	Nm (lbf in)
			mm (in)	mm (in)	mm (in)	mm (in)		
GC (◆)	3/8"	G 3/8	25 (0.9843)	15 (0.5906)	14 (0.5512)	4 (0.1575)	15 ⁺¹ (133 + 142)	—
GE	3/4"	G 3/4	—	24,5 (0.9646)	22 (0.8661)	—	30 ^{+2,5} (266 + 288)	90 ⁺⁵ (797 + 841)
GF	1"	G 1	—	30,5 (1.2008)	25 (0.9843)	—	50 ^{+2,5} (443 + 465)	130 ⁺¹⁰ (1151 + 1239)
GG	1 1/4	G 1 1/4	—	39 (1.5354)	26 (1.0236)	—	60 ⁺⁵ (531 + 575)	170 ⁺¹⁰ (1505 + 1593)
GH	1 1/2	G 1 1/2	—	45 (1.5354)	28 (1.1024)	—	70 ⁺⁵ (620 + 664)	210 ⁺¹⁰ (1859 + 1947)
GL	2"	G 2	—	57 (2.2441)	32 (1.2598)	—	150 ⁺¹⁰ (1328 + 1416)	—

(◆) = Drain port

SAE STRAIGHT THREAD PORTS J514 **ODT**

American straight thread UNC-UNF 60° conforms to ANSI B 1.1



CODE	Nominal size	A	∅ B	∅ C	D	E	Nm (lbf in)	Nm (lbf in)
			mm (in)	mm (in)	mm (in)	mm (in)		
OD	3/4"	1 1/16" - 12 UNF - 2B	42 (1.6535)	24,8 (0.9764)	20 (0.7874)	0,5 (0.0197)	40 ^{+2,5} (354 + 376)	120 ⁺¹⁰ (1082 + 1151)
OF	1"	1 5/16" - 12 UNF - 2B	50 (1.9685)	45 (◆) (1.7717)	20 (0.7874)	0,5 (0.0197)	60 ⁺⁵ (531 + 575)	170 ⁺¹⁰ (1505 + 1593)
OG	1 1/4	1 5/8" - 12 UNF - 2B	60 (2.3622)	39,1 (1.5394)	20 (0.7874)	0,5 (0.0197)	70 ⁺⁵ (620 + 664)	— 200 ⁺¹⁰ (1770 + 1859)
OH	1 1/2	1 7/8" - 12 UNF - 2B	65 (2.5591)	45,2 (1.7795)	20 (0.7874)	0,5 (0.0197)	100 ⁺⁵ (885 + 929)	—

(◆) = For MAGNUM 35