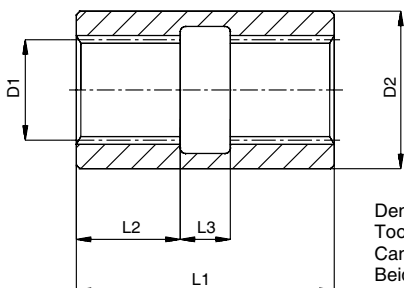
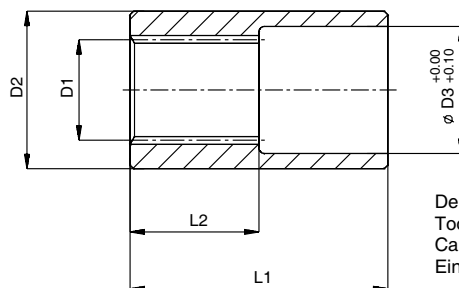


Giunti a manicotto serie BFM  
Series BFM splined sleeve couplings  
Accouplement à manchons serie BFM  
Kupplungsmuffen serie BFM

**DIN 5482**  
**DIN 5480**  
**SAE J 498**



Dentatura su due lati  
Toothings on two sides  
Cannelure sur deux côté  
Beidseitig verzahnt



Dentatura su un lato  
Toothings on one side  
Cannelure sur un côté  
Einseitig verzahnt

Manicotti con profilo scanalato interno secondo norme DIN 5482  
Sleeves teathed according to the DIN 5482 specifications

Manchons avec cannelure interieure à normes DIN 5482  
Muffen mit innenzahnprofil nach DIN 5482

| Sigla<br>Model code<br>Sigle<br>Bestellzeichen | Codice<br>Part number<br>Matricule<br>Bestellnummer | D1    | N.denti<br>Teeth numbers<br>N.dents<br>Zahnezahl | D2   | D3   | L1 | L2   | L3 |
|--|---|-------|--|------|------|----|------|----|
| BFM1   | 31200500  | 20x17 | 12   | 25   | 20,5 | 50 | 25   |    |
| BFM2   | 31200600  | 25x22 | 14   | 32   | 25,5 |    | 30   |    |
| BFM2 doppio                                    | 31200700  |       |  |      |      |    | 20   | 20 |
| BFM2Z15  | 31201300  | 28x25 | 15   | 34   | 28,5 | 60 |      |    |
| BFM2,5   | 31200800  | 32x28 | 17   | 39   | 32,5 |    | 30   |    |
| BFM3   | 31200900  | 35x31 | 18   | 42   | 35,5 | 71 | 29,5 |    |
| BFM3 doppio                                    | 31201000  |       |  | 44   |      |    |      | 12 |
| BFM3,5   | 31201100  | 40x36 | 20   | 49,5 | 40,5 | 66 | 33   |    |
| BFM4   | 31201200  | 48x44 | 23   | 62   | 48,5 | 90 | 42   |    |

Manicotti con profilo scanalato interno secondo norme DIN 5480  
Sleeves teathed according to the DIN 5480 specifications

Manchons avec cannelure interieure à normes DIN 5480  
Muffen mit innenzahnprofil nach DIN 5480

| Codice<br>Part number<br>Matricule<br>Bestellnummer | D1           | Modulo<br>Module<br>Module<br>Modul | N.denti<br>Teeth numbers<br>N.dents<br>Zahnezahl | D2   | D3   | L1 | L2 |
|---|--------------|-------------------------------------|--|------|------|----|----|
| 31203900  | N30x2x14x11H | 2                                   | 14   | 38   | 30,5 | 60 | 30 |
| 31203700  | N35x2x16x11H |                                     | 16   | 42   | 35,5 |    |    |
| 31203800  | N40x2x18x11H |                                     | 18   | 49,5 | 40,5 | 66 | 33 |

Manicotti con profilo scanalato interno secondo norme SAE  
Sleeves teathed according to the SAE specifications

Manchons avec cannelure interieure à normes SAE  
Muffen mit innenzahnprofil nach SAE

| Codice<br>Part number<br>Matricule<br>Bestellnummer | D1        | Modulo<br>Module<br>Module<br>Modul | N.denti<br>Teeth numbers<br>N.dents<br>Zahnezahl | D2 | D3   | L1 | L2 |
|---|-----------|-------------------------------------|--|----|------|----|----|
| 31203200  | 16/32" DP | 1,587                               | 13   | 30 | 23   | 50 | 25 |
| 31203300  |           |                                     | 15   | 32 | 26   | 60 | 30 |
| 31203500  |           |                                     | 21   | 42 | 35,5 |    |    |
| 31203600  |           |                                     | 23   | 49 | 38,6 | 66 | 33 |
| 31203400  | 12/24" DP | 2,116                               | 12   | 34 | 28,5 | 60 | 30 |
| 31203100  |           |                                     | 14   | 39 | 32,5 |    |    |