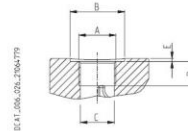
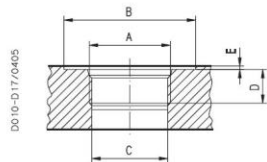


American straight thread UNC-UNF 60° conforms to ANSI B 1.1

British standard pipe parallel (55°) conforms to UNI - ISO 228



CODE	Nominal size	A	Ø B		D	E	Nm (lbf in)	Nm (lbf in)
			mm (in)	mm (in)				
<b>OD</b>	3/4"	1 1/16" - 12 UNF - 2B	42 (1.6535)	24,8 (0.9764)	20 (0.7874)	0,5 (0.0197)	40 <sup>+2.5</sup> (354 ÷ 376)	120 <sup>+10</sup> (1062 ÷ 1151)
<b>OF</b>	1"	1 5/16" - 12 UNF - 2B	50 (1.9685) 45 (◆) (1.7717)	30,5 (1.2008)	20 (0.7874)	0,5 (0.0197)	60 <sup>+5</sup> (531 ÷ 575)	170 <sup>+10</sup> (1505 ÷ 1593)
<b>OG</b>	1" 1/4	1 5/8" - 12 UNF - 2B	60 (2.3622) 58 (◆) (2.2835)	39,1 (1.5394)	20 (0.7874)	0,5 (0.0197)	70 <sup>+5</sup> (620 ÷ 664)	— 200 <sup>+10</sup> (1770 ÷ 1859)
<b>OH</b>	1" 1/2	1 7/8" - 12 UNF - 2B	65 (2.5591)	45,2 (1.7795)	20 (0.7874)	0,5 (0.0197)	100 <sup>+5</sup> (885 ÷ 929)	—

(◆) = For MAGNUM 35

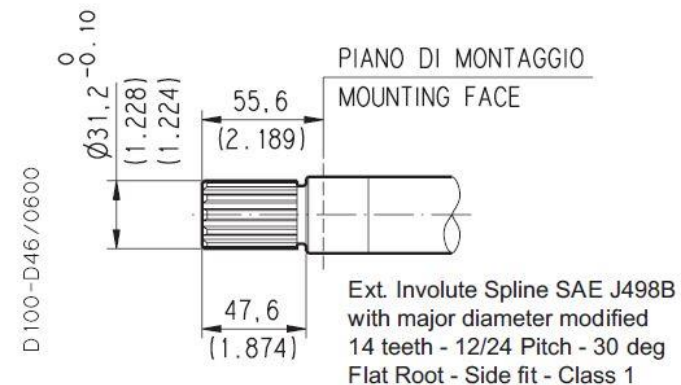
CODE	Nominal size	A	Ø B		D	E	Nm (lbf in)	Nm (lbf in)
			mm (in)	mm (in)				
<b>GC (◆)</b>	3/8"	G 3/8	25 (0.9843)	15 (0.5906)	14 (0.5512)	4 (0.1575)	15 <sup>+1</sup> (133 ÷ 142)	—
<b>GE</b>	3/4"	G 3/4	—	24,5 (0.9646)	22 (0.8661)	—	30 <sup>+2,5</sup> (266 ÷ 288)	90 <sup>+5</sup> (797 ÷ 841)
<b>GF</b>	1"	G 1	—	30,5 (1.2008)	25 (0.9843)	—	50 <sup>+2,5</sup> (443 ÷ 465)	130 <sup>+10</sup> (1151 ÷ 1239)
<b>GG</b>	1" 1/4	G 1 1/4	—	39 (1.5354)	26 (1.0236)	—	60 <sup>+5</sup> (531 ÷ 575)	170 <sup>+10</sup> (1505 ÷ 1593)
<b>GH</b>	1" 1/2	G 1 1/2	—	45 (1.5354)	28 (1.1024)	—	70 <sup>+5</sup> (620 ÷ 664)	210 <sup>+10</sup> (1859 ÷ 1947)
<b>GL</b>	2"	G 2	—	57 (2.2441)	32 (1.2598)	—	150 <sup>+10</sup> (1328 ÷ 1416)	—

(◆) = Drain port

Pump type HDP Motor type HDM	Displacement in <sup>3</sup> /rev (cm <sup>3</sup> /rev)	Max. pressure			Max. speed	Min. speed
		p <sub>1</sub>	p <sub>2</sub>	p <sub>3</sub>		
		psi (bar)			min <sup>-1</sup>	
<b>HD. 30-17</b>	1.05 (17,28)	4060 (280)	4350 (300)	4640 (320)	3000	400
<b>HD. 30-22</b>	1.34 (21,99)	4060 (280)	4350 (300)	4640 (320)	3000	400
<b>HD. 30-24</b>	1,47 (24,03)	4060 (280)	4350 (300)	4640 (320)	3000	400
<b>HD. 30-27</b>	1.63 (26,70)	4060 (280)	4350 (300)	4640 (320)	3000	400
<b>HD. 30-34</b>	2.11 (34,56)	3915 (270)	4205 (290)	4495 (310)	3000	400
<b>HD. 30-38</b>	2.40 (39,27)	3915 (270)	4205 (290)	4495 (310)	3000	400
<b>HD. 30-43</b>	2.68 (43,98)	3770 (260)	4060 (280)	4350 (300)	3000	400
<b>HD. 30-51</b>	3.16 (51,83)	3335 (230)	3770 (260)	4060 (280)	2500	300
<b>HD. 30-56</b>	3.45 (56,55)	3118 (215)	3553 (245)	3843 (265)	2500	300
<b>HD. 30-61</b>	3.74 (61,26)	2900 (200)	3335 (230)	3625 (250)	2000	250
<b>HD. 30-73</b>	4.50 (73,82)	2755 (190)	3045 (210)	3335 (230)	1700	250
<b>HD. 30-82</b>	4.98 (81,68)	2465 (170)	2755 (190)	3045 (210)	1500	250

SAE "C" SPLINE

Mounting face refer to flange code S8



HD. 30

MAX 170 Nm (1505 lbf in) ◆

HD. 35

MAX 900 Nm (7966 lbf in) ◆

SAE "C" 2-4 HOLES

S8

Conforms to SAE J744

