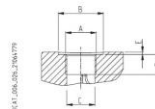


Pump type Motor type	A	B	C	D	E	F	G
	mm (inch)	mm (inch)	mm (inch)	mm (inch)	mm (inch)	mm (inch)	mm (inch)
<b>HD. 35•40</b>	224,5 (8.8386)	213 (8.3858)	27,35 (1.0768)	172 (6.7717)	90 (3.5433)	85 (3.3465)	89 (3.5039)
<b>HD. 35•50</b>	229,5 (9.0354)	218 (8.5827)					
<b>HD. 35•63</b>	235,5 (9.2717)	224 (8.8189)					
<b>HD. 35•71</b>	239,5 (9.4291)	228 (8.9764)					
<b>HD. 35•80</b>	243,5 (9.5866)	232 (9.1339)					
<b>HD. 35•90</b>	248,5 (9.7835)	237 (9.3307)					
<b>HD. 35•100</b>	252,5 (9.9409)	241 (9.4882)					
<b>HD. 35•112</b>	258,5 (10.1772)	247 (9.7244)					
<b>HD. 35•125</b>	264,5 (10.4134)	253 (9.9606)					

**GAS STRAIGHT THREAD PORTS**

**BSPP**

British standard pipe parallel (55°) conforms to UNI - ISO 228



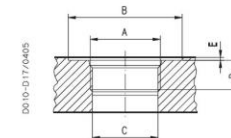
CODE	Nominal size	A	Ø B	Ø C	D	E	Nm (lbf in)	Nm (lbf in)
			mm (in)	mm (in)	mm (in)	mm (in)		
<b>GC (♦)</b>	3/8"	G 3/8	25 (0.9843)	15 (0.5906)	14 (0.5512)	4 (0.1575)	15 <sup>+1</sup> (133 + 142)	—
<b>GE</b>	3/4"	G 3/4	—	24,5 (0.9646)	22 (0.8661)	—	30 <sup>+2,5</sup> (266 + 288)	90 <sup>+5</sup> (797 + 841)
<b>GF</b>	1"	G 1	—	30,5 (1.2008)	25 (0.9843)	—	50 <sup>+2,5</sup> (443 + 465)	130 <sup>+10</sup> (1151 + 1239)
<b>GG</b>	1 1/4	G 1 1/4	—	39 (1.5354)	26 (1.0236)	—	60 <sup>+5</sup> (531 + 575)	170 <sup>+10</sup> (1505 + 1593)
<b>GH</b>	1 1/2	G 1 1/2	—	45 (1.5354)	28 (1.1024)	—	70 <sup>+5</sup> (620 + 664)	210 <sup>+10</sup> (1859 + 1947)
<b>GL</b>	2"	G 2	—	57 (2.2441)	32 (1.2598)	—	150 <sup>+10</sup> (1328 + 1416)	—

(♦) = Drain port

**SAE STRAIGHT THREAD PORTS J514**

**ODT**

American straight thread UNC-UNF 60° conforms to ANSI B 1.1



CODE	Nominal size	A	Ø B	Ø C	D	E	Nm (lbf in)	Nm (lbf in)
			mm (in)	mm (in)	mm (in)	mm (in)		
<b>OD</b>	3/4"	1 1/16" - 12 UNF - 2B	42 (1.6535)	24,8 (0.9764)	20 (0.7874)	0,5 (0.0197)	40 <sup>+2,5</sup> (354 + 376)	120 <sup>+10</sup> (1082 + 1151)
<b>OF</b>	1"	1 5/16" - 12 UNF - 2B	50 (1.9685)	30,5 (1.2008)	20 (0.7874)	0,5 (0.0197)	60 <sup>+5</sup> (531 + 575)	170 <sup>+10</sup> (1505 + 1593)
<b>OG</b>	1 1/4	1 5/8" - 12 UNF - 2B	60 (2.3622)	39,1 (1.5394)	20 (0.7874)	0,5 (0.0197)	70 <sup>+5</sup> (620 + 664)	200 <sup>+10</sup> (1770 + 1859)
<b>OH</b>	1 1/2	1 7/8" - 12 UNF - 2B	65 (2.5591)	45,2 (1.7795)	20 (0.7874)	0,5 (0.0197)	100 <sup>+5</sup> (885 + 929)	—

(♦) = For MAGNUM 35

Pump type HDP Motor type HDM	Displacement	Max. pressure			Max. speed	Min. speed
		p <sub>1</sub>	p <sub>2</sub>	p <sub>3</sub>		
	in <sup>3</sup> /rev (cm <sup>3</sup> /rev)	psi (bar)			min <sup>-1</sup>	
<b>HD. 35•40</b>	2.47 (40,46)	3915 (270)	4060 (280)	4495 (310)	3000	400
<b>HD. 35•50</b>	3.12 (51,10)	3915 (270)	4060 (280)	4495 (310)	3000	400
<b>HD. 35•63</b>	3.90 (63,88)	3915 (270)	4060 (280)	4495 (310)	3000	400
<b>HD. 35•71</b>	4.42 (72,40)	3625 (250)	4060 (280)	4350 (300)	3000	400
<b>HD. 35•80</b>	4.94 (80,91)	3625 (250)	4060 (280)	4350 (300)	3000	400
<b>HD. 35•90</b>	5.59 (91,56)	3335 (230)	3770 (260)	4060 (280)	2700	400
<b>HD. 35•100</b>	6.10 (100,08)	3045 (210)	3480 (240)	3770 (260)	2700	400
<b>HD. 35•112</b>	6.88 (112,85)	2755 (190)	3190 (220)	3480 (240)	2700	400
<b>HD. 35•125</b>	7.66 (125,63)	2465 (170)	2900 (200)	3190 (220)	2500	250