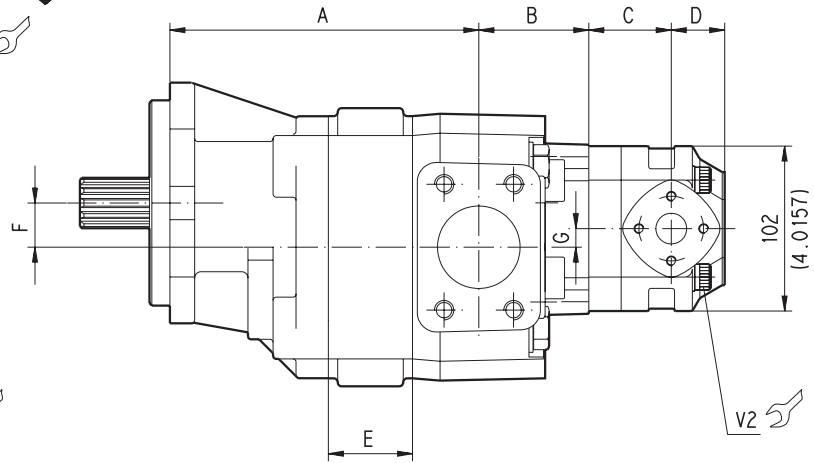
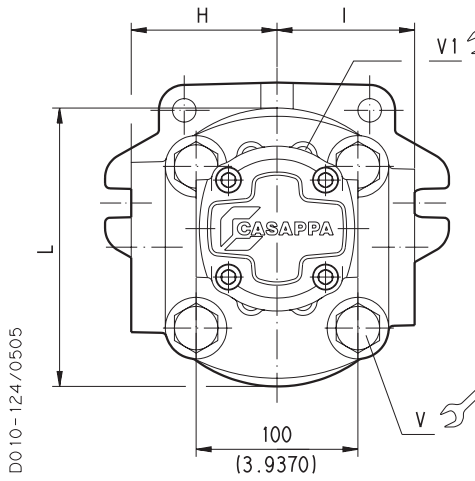
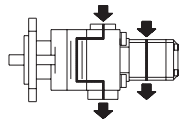


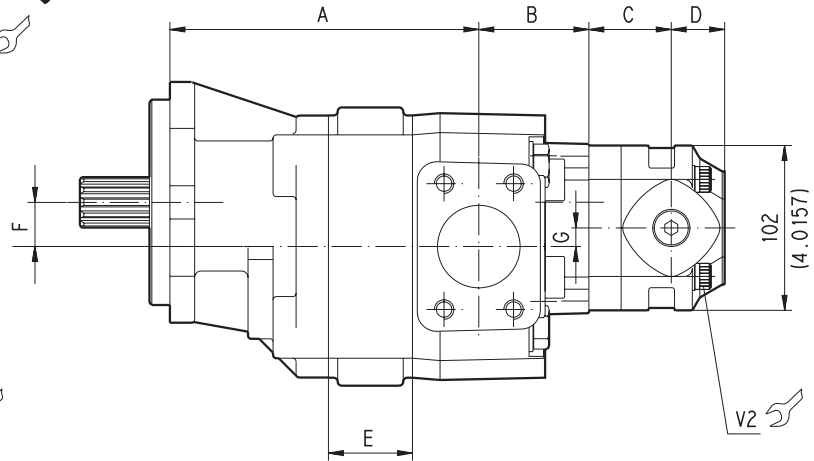
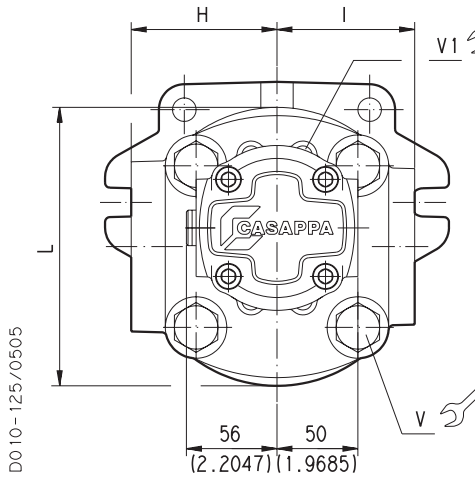
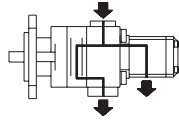
DOUBLE PUMPS HDP.. / KP20 STANDARD VERSION

SEPARATED INLET



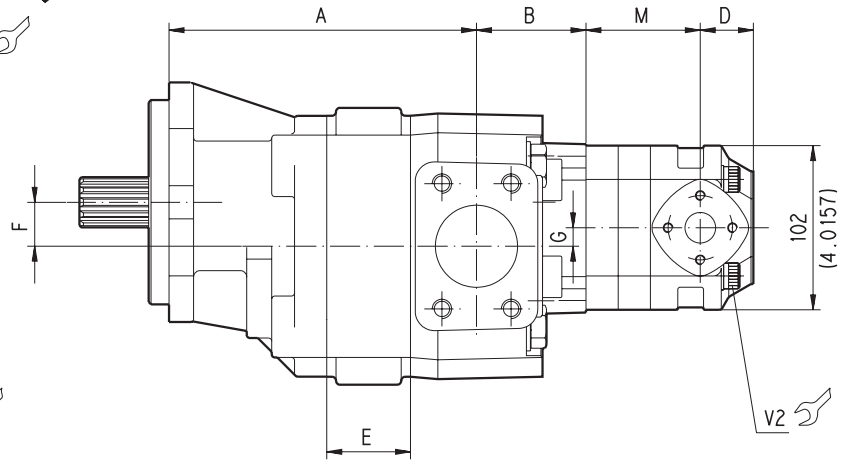
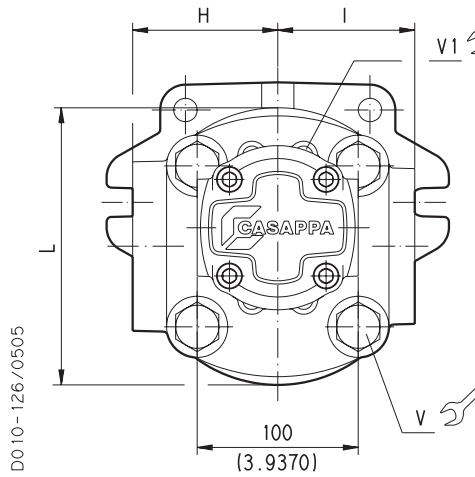
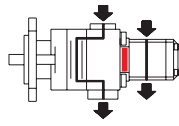
D0 10-124/0505

COMMON INLET



D0 10-125/0505

SEPARATED STAGES



D0 10-126/0505

01/07.05

DOUBLE PUMPS HDP.. / KP20 STANDARD VERSION

Tightening torque Nm (lbf in)		
V	V1	V2
280 ^{±28} (2230 ÷ 2726)	25 ^{±2,5} (199 ÷ 243)	70 ^{±7} (558 ÷ 682)

Drawings show pumps with left rotation.

Pump type	A	B	F	G	H (IN)	I (OUT)	L
	mm (inch)	mm (inch)	mm (inch)	mm (inch)	mm (inch)	mm (inch)	mm (inch)
HDP35/KP20	139+E (5.4724+E)	68 (2.6772)	27,35 (1.0807)	11,27 (0.4437)	90 (3.5433)	85 (3.3465)	172 (6.7717)
HDP30/KP20	115+E (4.5276+E)	62 (2.4409)	23,45 (0.9232)	7,45 (0.2933)	80 (3.1496)	75 (2.9528)	150 (5.9055)

Pump type	E
	mm (inch)
HDP 35•40	33 (1.2992)
HDP 35•50	38 (1.4961)
HDP 35•63	44 (1.7323)
HDP 35•71	48 (1.8898)
HDP 35•80	52 (2.0472)
HDP 35•90	57 (2.2441)
HDP 35•100	61 (2.4016)
HDP 35•112	67 (2.6378)
HDP 35•125	73 (2.8740)

Pump type	E
	mm (inch)
HDP 30•17	23 (0.9055)
HDP 30•22	26 (1.0236)
HDP 30•24	27,3 (1.0748)
HDP 30•27	29 (1.1417)
HDP 30•34	34 (1.3386)
HDP 30•38	37 (1.4567)
HDP 30•43	40 (1.5748)
HD. 30•51	45 (1.7717)
HDP 30•56	48 (1.8898)
HDP 30•61	51 (2.0079)
HDP 30•73	59 (2.3228)
HDP 30•82	64 (2.5197)

DRIVE SHAFTS:
see page 45

MOUNTING FLANGE:
see page 46 ÷ 48

PORTS:
see page 49

Pump type	C	D	M
	mm (inch)	mm (inch)	mm (inch)
KP 20•4	44,5 (1.7520)	27,5 (1.0827)	61,5 (2.4213)
KP 20•6,3	47 (1.8504)	27,5 (1.0827)	64 (2.5197)
KP 20•8	49,5 (1.9488)	27,5 (1.0827)	66,5 (2.6181)
KP 20•11,2	53 (2.0866)	27,5 (1.0827)	70 (2.7559)
KP 20•14	51,5 (2.0276)	33 (1.2992)	68,5 (2.6969)
KP 20•16	57 (2.2441)	33 (1.2992)	74 (2.9134)
KP 20•20	63,5 (2.5000)	33 (1.2992)	80,5 (3.1693)
KP 20•25	56,5 (2.2244)	48 (1.8898)	73,5 (2.8937)
KP 20•31,5	66,5 (2.6181)	48 (1.8898)	83,5 (3.2874)

01/07.05